



Royal College of
Obstetricians and
Gynaecologists



UK Obstetric Surveillance System



National Perinatal
Epidemiology Unit

Newsletter 22: July 2010

AH1N1v “Swine flu” main study messages

The AH1N1v influenza in pregnancy study results will be published in the journal *Health Technology Assessment* this month. The journal is available free to access for all and we will put the link to the final results on the UKOSS website as soon as it is confirmed. These are the main messages from the study:

- Earlier treatment with antiviral agents is associated with improved outcomes for pregnant women and it is important that women with suspected AH1N1v flu receive antivirals promptly after the onset of their symptoms.
- Women with asthma and other co-morbidities are more likely to be admitted to hospital with AH1N1v in pregnancy. We need to remain aware of this association and work to ensure that women with co-existing illnesses in pregnancy receive immunisation and if they develop AH1N1v are treated appropriately.
- Maternal obesity during pregnancy is associated with both admission to hospital with confirmed infection and critical illness from AH1N1v. This highlights the importance of ongoing work to support obesity prevention at a community level.
- Maternal smoking, particularly in younger mothers, is also associated with admission with AH1N1v in pregnancy and thus prevention programmes continue to be important.
- Data on outcomes of pregnancy in women admitted to hospital with confirmed AH1N1v influenza are, as yet, incomplete. However, there appears to be a significantly increased risk of preterm delivery which has implications for provision of neonatal care.

Note that AH1N1v is expected to be the main circulating strain of influenza this winter, and thus ongoing immunisation of pregnant women is important, as well as early use of antivirals in suspected cases.

Case report summary for current studies to 21st June 2010

Disorder	Actual number of reported cases	Data collection forms returned (%)	Number of confirmed cases	Expected number of confirmed cases
Amniotic fluid embolism	115	108 (94)	68	65
Aortic dissection	5	3 (60)	1	39
Myeloproliferative disorders	7	5 (71)	5	23
Non-renal solid organ transplant recipients	71	61 (86)	49	71
Pituitary tumours in pregnancy	10	1 (10)	1	15
Placenta Accreta	Data collection just commenced			
Pulmonary vascular disease	68	56 (82)	25	37
Sickle cell disease in pregnancy	30	9 (30)	7	96

Thanks to the following hospitals who have returned cards for the last three months:

Aberdeen Maternity Hospital, Aberdeen
 Airedale General Hospital, Keighley
 Alexandra Hospital, Redditch
 Altnagalvin Area Hospital, Londonderry
 Antrim Hospital, Antrim
 Ayrshire Maternity Unit, Kilmarnock
 Basildon Hospital, Basildon
 Bassetlaw District General Hospital, Worksop
 Bedford Hospital, Bedford
 Birmingham City Hospital, Birmingham
 Birmingham Heartlands Hospital, Birmingham
 Birmingham Women's Hospital, Birmingham
 Borders General Hospital, Melrose
 Bradford Royal Infirmary, Bradford
 Bronglais Hospital, Aberystwyth
 Burnley General Hospital, Burnley
 Caithness General Hospital, Wick
 Calderdale Royal Hospital, Halifax
 Causeway Hospital, Coleraine
 Chelsea & Westminster Hospital, London
 Cheltenham General Hospital, Cheltenham
 Chesterfield & North Derbyshire Royal Hospital, Chesterfield
 City Hospitals Sunderland NHS Trust, Sunderland
 Colchester General Hospital, Colchester
 Conquest Hospital, St Leonards-on-Sea
 Countess of Chester Hospital, Chester
 Craigavon Area Hospital, Portadown
 Cumberland Infirmary, Carlisle
 Daisy Hill Hospital, Newry
 Darlington Memorial Hospital, Darlington
 Deriford Hospital, Plymouth
 Dewsbury and District Hospital, Dewsbury
 Diana Princess of Wales Hospital, Grimsby
 Doncaster Royal Infirmary, Doncaster
 Dr Gray's Hospital, Elgin
 Dumfries & Galloway Royal Infirmary, Dumfries
 Ealing Hospital, London
 Eastbourne District General Hospital, Eastbourne
 Epsom General Hospital, Epsom
 Erne Hospital, Enniskillen
 Fairfield General Hospital, Bury
 Forth Park Hospital, Kirkcaldy
 Friarage Hospital, Northallerton
 Frimley Park Hospital, Camberley
 Furness General Hospital, Barrow-in-Furness
 George Eliot Hospital, Nuneaton
 Glan Clwyd District General Hospital, Rhyl
 Gloucestershire Royal Hospital, Gloucester
 Good Hope Hospital, Sutton Coldfield
 Guy's and St Thomas' Hospital, London
 Harrogate District Hospital, Harrogate
 Hereford County Hospital, Hereford
 Hinchingbrooke Hospital, Huntingdon
 Homerton Hospital, London
 Hope Hospital, Manchester
 Horton Hospital, Banbury
 Hospital of St John and St Elizabeth, London
 Hull Royal Infirmary, Hull
 Ipswich Hospital, Ipswich
 James Cook University Hospital, Middlesbrough
 James Paget Hospital, Great Yarmouth
 John Radcliffe Hospital, Oxford
 Kettering General Hospital, Kettering
 King George Hospital, Ilford
 King's College Hospital, London
 King's Mill Hospital, Sutton in Ashfield
 Kingston Hospital, Kingston upon Thames
 Lagan Valley Hospital, Lisburn
 Leeds General Infirmary, Leeds
 Lincoln County Hospital, Lincoln
 Luton & Dunstable Hospital, Luton
 Macclesfield District General Hospital, Macclesfield
 Manor Hospital, Walsall
 Mater Infirmorum Hospital, Belfast
 Mayday University Hospital, Thomton Heath
 Medway Maritime Hospital, Gillingham
 Nevill Hall Hospital, Abergavenny
 New Cross Hospital, Wolverhampton
 Ninewells Hospital & Medical School, Dundee
 Nobles Hospital, Douglas
 Norfolk & Norwich University Hospital, Norwich
 North Devon District Hospital, Barnstaple
 North Manchester General Hospital, Manchester
 Northampton General Hospital, Northampton
 Northwick Park Hospital, Harrow
 Pembury Hospital, Tunbridge Wells
 Peterborough Maternity Unit, Peterborough
 Pilgrim Hospital, Boston
 Pontefract General Infirmary, Pontefract
 Prince Charles Hospital, Methyr Tydfil
 Princess Alexandra Hospital, Harlow
 Princess Anne Hospital, Southampton
 Princess Elizabeth Hospital, St Martins
 Princess of Wales Hospital, Bridgend
 Princess Royal Maternity Hospital, Glasgow
 Princess Royal University Hospital, Orpington
 Queen Alexandra Hospital, Portsmouth
 Queen Charlotte's and Chelsea Hospital, London
 Queen Elizabeth Hospital, Gateshead
 Queen Elizabeth Hospital, Kings Lynn
 Queen Elizabeth Hospital, London
 Queen Elizabeth II Hospital, Welwyn Garden City
 Queen Elizabeth the Queen Mother Hospital, Margate
 Queen Mary's Hospital, Sidcup
 Queen's Hospital, Burton upon Trent
 Queen's Hospital, Romford
 Rosie Maternity Hospital, Cambridge
 Rotherham District General Hospital, Rotherham
 Royal Albert Edward Infirmary, Wigan
 Royal Alexandra Hospital, Paisley
 Royal Blackburn Hospital, Blackburn
 Royal Bolton Hospital, Bolton
 Royal Cornwall Hospital, Truro
 Royal Free Hospital, London
 Royal Glamorgan Hospital, Llantrisant
 Royal Gwent Hospital, Newport
 Royal Hampshire County Hospital, Winchester
 Royal Jubilee Maternity Service, Belfast
 Royal Lancaster Infirmary, Lancaster
 Royal Oldham Hospital, Oldham
 Royal Shrewsbury Hospital, Shrewsbury
 Royal Surrey County Hospital, Guildford
 Royal Sussex County Hospital, Brighton
 Royal United Hospital, Bath
 Royal Victoria Infirmary, Newcastle-upon-Tyne
 Russells Hall Hospital, Dudley
 Salisbury District Hospital, Salisbury
 Scarborough Hospital, Scarborough
 Scunthorpe General Hospital, Scunthorpe
 Sharoe Green Unit, Preston
 Simpson Centre for Reproductive Health, Edinburgh
 Singleton Hospital, Swansea
 South Tyneside District Hospital, South Shields
 Southend Hospital, Westcliff-on-Sea
 Southern General Hospital, Glasgow
 Southmead Hospital, Bristol
 Southport & Ormskirk Hospital NHS Trust, Ormskirk
 St George's Hospital, London
 St James's University Hospital, Leeds
 St John's Hospital, Chelmsford
 St John's Unit at Howden, Livingston
 St Mary's Hospital, London
 St Mary's Hospital, Manchester
 St Mary's Hospital, Newport
 St Michael's Hospital, Bristol
 St Peter's Hospital, Chertsey
 St Richard's Hospital, Chichester
 Staffordshire General Hospital, Stafford
 Stepping Hill Hospital, Stockport
 Stirling Royal Infirmary, Stirling
 Stoke Mandeville Hospital, Aylesbury
 Tameside General Hospital, Ashton-under-Lyne
 Taunton and Somerset Hospital, Taunton
 The Great Western Hospital, Swindon
 Torbay Hospital, Torquay
 Ulster Hospital, Belfast
 University College Hospital, London
 University Hospital Lewisham, London
 University Hospital of Coventry & Warwickshire, Coventry
 University Hospital of North Durham, Durham
 University Hospital of North Staffordshire, Stoke on Trent
 University Hospital of North Tees, Stockton-on-Tees
 University Hospital of Wales, Cardiff
 Victoria Hospital, Blackpool
 Wansbeck General Hospital, Ashington
 Warrington Hospital, Warrington
 Warwick Hospital, Warwick
 Watford General Hospital, Watford
 West Cumberland Hospital, Whitehaven
 West Middlesex University Hospital, Isleworth
 West Suffolk Hospital, Bury St Edmunds
 West Wales General Hospital, Carmarthen
 Western Isles Hospital, Stornaway
 Wexham Park Hospital, Slough
 Whipps Cross University Trust Hospital, London
 Whiston Hospital, Prescot
 Wishaw General Hospital, Wishaw
 Withybush Hospital, Haverfordwest
 Worcestershire Royal Hospital, Worcester
 Worthing Hospital, Worthing
 Wrexham Maelor Hospital, Wrexham
 Wycombe General Hospital, High Wycombe
 Wythenshawe Hospital, Manchester
 Yeovil Women's Hospital, Yeovil
 York Hospital, York
 Ysbyty Gwynedd District General Hospital, Bangor
 Barnet and Chase Farm Hospitals NHS Trust, Enfield
 Bamsley District General Hospital, Bamsley
 Darent Valley Hospital, Dartford
 Derby Hospitals NHS Foundation Trust, Derby
 Dorset County Hospital, Dorchester
 East Surrey Hospital, Redhill
 Jersey General Hospital, St Helier
 Leicester General Hospital, Leicester
 Leighton Hospital, Crewe
 Lister Hospital, Stevenage
 Liverpool Women's Hospital, Liverpool
 Maidstone General Hospital, Maidstone
 Milton Keynes General Hospital, Milton Keynes
 Newham General Hospital, London
 North Hampshire Hospital, Basingstoke
 North Middlesex Hospital, London
 Poole Hospital, Poole
 Raigmore Hospital, Inverness
 Rochdale Infirmary, Rochdale
 Royal Berkshire Hospital, Reading
 Royal Devon & Exeter Hospital, Exeter
 Royal London Hospital, London
 Solihull Hospital, Solihull
 The Jessop Wing, Sheffield
 The Portland Hospital, London
 Whittington Hospital, London
 Arrows Park Hospital, Wirral
 Hillingdon Hospital, Uxbridge
 Nottingham University Hospitals NHS Trust, Nottingham
 Princess Royal Hospital, Haywards Heath

Returned all three cards. Returned two cards. Returned one card.

New Study – Severe Obstetric Cholestasis

Key points

- Obstetric cholestasis is associated with an increased risk of adverse fetal outcomes.
- The risk of adverse fetal outcomes is thought to be increased in women with severe cholestasis.^{1,2}
- There are no prospective national studies to estimate the incidence or outcomes of severe cholestasis in pregnancy.
- This study will investigate the incidence, management and outcomes for mother and infant in pregnancies where the mother has severe obstetric cholestasis.

Research questions

- What is the current incidence of severe obstetric cholestasis in the UK?
- What management strategies are used for women with severe obstetric cholestasis; in particular the incidence of elective preterm delivery and the use of ursodeoxycholic acid treatment?
- What complications are seen during pregnancy in women with severe obstetric cholestasis?
- What are the outcomes for mother and infant?

Surveillance Period

June 2010- May 2011

Case definition

Any woman in the UK identified as having severe obstetric cholestasis using the following definition:

Pruritus in the absence of a rash and in association with a single maternal serum bile acid level greater than 40 $\mu\text{mol/L}$ at any time point in the pregnancy

Excluded: Women with obstetric cholestasis but with bile acid levels less than 40 $\mu\text{mol/L}$.

Funding

Wellbeing of Women

Wellbeing of Women

Charity Registration No: 239281

Investigators

Professor Catherine Williamson, Institute of Reproductive and Developmental Biology, Imperial College London

Dr Victoria Geenes, Institute of Reproductive and Developmental Biology, Imperial College London

Dr Marian Knight, National Perinatal Epidemiology Unit, University of Oxford

References

1. Geenes, V., *et al.*, World J Gastroenterol 2009; 2049-2066
2. Glantz, A., *et al.*, Hepatology 2004; 40: 467-474



UKNeS – The National Maternal Near-miss Surveillance Programme

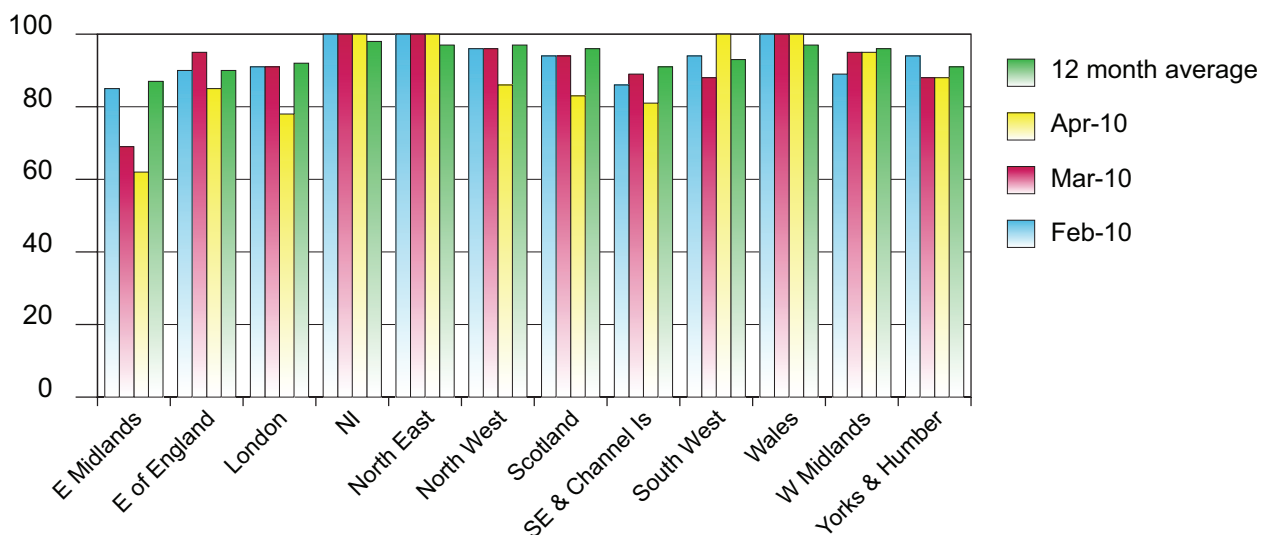


Enclosed with this newsletter you will find a leaflet describing the new National Maternal Near-miss Programme. This five year programme, as part of a grant from the NIHR, will fund some of the studies on the UKOSS card and these studies will use the normal UKOSS reporting system. The first of these studies is the placenta accreta study which appeared on the card for the first time this month. Other elements of the programme are described on the flyer; these will be conducted through projects using different methods outside of the UKOSS programme and will not usually involve UKOSS reporters. If you would like further information, please see the UKNeS website (www.npeu.ox.ac.uk/uknes) or email uknes@npeu.ox.ac.uk.

One of the elements of the new programme is to further investigate women's experiences of near-miss morbidity. We are holding a meeting for women interested in sharing their experiences on 23rd September 2010. If any of you know of any women who might be interested in sharing their experience of life-threatening illness in pregnancy, please put them in touch with us at uknes@npeu.ox.ac.uk for further information.

UKOSS Regional Card Return Rates

Card return rates February 2010 - April 2010



Marian Knight: **01865 289727**
 Carole Harris: **01865 289714**

email: UKOSS@npeu.ox.ac.uk
 web: www.npeu.ox.ac.uk/UKOSS

This is an independent report from a study which is part-funded by the Policy Research Programme in the Department of Health. The views expressed are not necessarily those of the Department. Studies are additionally funded by Wellbeing of Women, the Obstetric Anaesthetists Association, Guy's and St Thomas' Charity, SPARKS, Heart UK and the Edgar Research Fellowship Fund of the Royal College of Obstetricians and Gynaecologists.